

FABPRO POLYMERS'

SPECTER™

Monofilament Fiber

DESCRIPTION

SPECTER™ Monofilament Fibers are manufactured from 100% virgin homopolymer polypropylene resins. SPECTER™ Fibers meet the requirements of ASTM C1116/C1116M “Standard Specification for Fiber-Reinforced Concrete”, ASTM D7508/D7508M “Standard Specification for Polyolefin Chopped Strands for use in Concrete”, and the requirements of ICC ES AC32 Section 3.1.1 for plastic shrinkage reinforcement.

APPLICATIONS

Recommended for use in:

- Slab-on-ground construction
- Concrete pavement
- Whitetopping and overlays
- Architectural precast
- Shotcrete
- Decorative concrete
- Stucco
- Reducing explosive spalling in the event of a fire
- Marine elements

FEATURES

SPECTER™ Monofilament Fibers are specially designed to minimize early-age cracking in concrete. Millions of high tensile, high modulus filaments in every yard create an extremely dense, three-dimensional network in most cementitious applications.

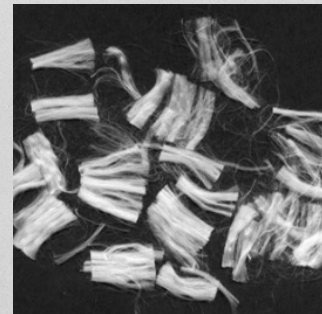
SPECTER™ Monofilament Fibers have the unique ability to reduce explosive spalling and damage in the event of a fire.

BENEFITS

- Inhibits and controls the formation of intrinsic cracking in concrete.
- Reduces plastic shrinkage cracking by an average of 75% at a dosage rate of one pound per cubic yard, along with helping to prevent settlement cracking.
- Measurably reduces concrete permeability, thus increasing the durability and service life of the concrete.
- Provides three-dimensional reinforcement against micro-cracking.
- Increases the impact and abrasion resistance of the concrete.

PERFORMANCE CHARACTERISTICS

Specific Gravity	0.91
Melting Point	320°F (160°C)
Ignition Point	1,094°F (590°C)
Absorption	Nil
Alkali Resistance	Excellent
Tensile Strength	25,000 psi (170 MPa)
Length	0.75" (19 mm)
Denier	7.0
Modulus of Elasticity	300 ksi (2.07 GPa)
Fiber Count	30 million/lb (0.45 kg)





GUIDELINES FOR USE

Dosage: The recommended dosage for the SPECTER™ Monofilament Fiber is 1.0 lb/yd³ (0.6 kg/m³).

Mixing: SPECTER™ Monofilament Fibers are packaged in pre-weighed, ready-to-use, degradable bags which are designed to be introduced at any time before or during mixing of concrete produced in accordance with procedures specified in ASTM C94/C94M. Standard practices detailed in ACI 302 for placing, finishing and curing concrete should be followed when using SPECTER™ Fibers.

ENGINEERING SPECIFICATIONS

SPECTER™ Monofilament Fibers, when used at an appropriate dosage, provide excellent plastic shrinkage and crack reduction for concrete in the plastic state. SPECTER™ Monofilament Fibers are rust proof, alkali resistant, and compliant with industry codes when used in concrete mixed in accordance with ASTM C94/C94M.

SPECTER™ Monofilament Fiber should be specified for use in concrete slabs, precast and shotcrete:

- To help control bleed water
- To reduce plastic shrinkage cracking
- To increase abrasion resistance
- To improve impact resistance
- To reduce explosive spalling in case of a fire

FABPRO POLYMERS does not recommend this fiber for use in slabs as a substitute for primary/structural reinforcement.

STORAGE AND HANDLING

Storage Temperature: SPECTER™ Monofilament Fibers should be stored at temperatures below 140°F (60°C). Avoid storing near strong oxidizers and avoid sources of ignition. Use caution when stacking to avoid unstable conditions. Store in a sprinkled warehouse.

PACKAGING

SPECTER™ Monofilament Fibers are packaged in pre-weighed degradable 0.5 lb (0.23 kg) to 1.5 lb (0.68 kg) bags that can be added directly to the mixing system.

RELATED DOCUMENTS

Safety Data Sheets: SPECTER™ Monofilament Fiber

ADDITIONAL INFORMATION

For additional information on SPECTER™ Monofilament Fibers, contact your local sales representative or Customer Service at (800) 821-4391.

DISCLAIMER OF WARRANTIES & LIMITATION OF LIABILITY

SELLER AND MANUFACTURER DO NOT MAKE ANY WARRANTY WHATSOEVER REGARDING THIS PRODUCT, EITHER EXPRESS OR IMPLIED, INCLUDING, WITHOUT LIMITATION, ANY IMPLIED WARRANTY OF MERCHANTABILITY, FITNESS FOR A PARTICULAR PURPOSE, CONDITION, DESIGN OR QUALITY. BUYER'S EXCLUSIVE REMEDY AND THE SELLER'S AND THE MANUFACTURER'S EXCLUSIVE LIABILITY FOR ANY CLAIMS, LOSSES, DAMAGES OR INJURIES RESULTING FROM THE USE OF THIS PRODUCT, SHALL BE LIMITED TO THE REPLACEMENT OF THE PRODUCT WITH RESPECT TO WHICH DAMAGES ARE CLAIMED. IN NO CASE SHALL THE SELLER OR THE MANUFACTURER BE LIABLE FOR DIRECT, CONSEQUENTIAL, SPECIAL, INCIDENTAL, PUNITIVE OR INDIRECT DAMAGES RESULTING FROM THE PURCHASE OR USE OF THIS PRODUCT. BUYER ACCEPTS THIS PRODUCT SUBJECT TO THE FOREGOING DISCLAIMER AND PURCHASES AND USES THIS PRODUCT AT BUYER'S OWN RISK. NO EMPLOYEE OR AGENT OF SELLER OR THE MANUFACTURER IS AUTHORIZED TO VARY THE TERMS OF THIS DISCLAIMER IN ANY MANNER.

©2016 GLPT FSPS 12/05